



Protecting & conserving the unique landscape character of Lagan Valley Regional Park and the Lagan Valley AONB, enhancing its biodiversity, cultural heritage and promoting its benefit to visitors and the community.



At a glance our achievements

- Lagan valley learning website launched
- Towpath leaflet revised and printed
- Heritage Audio trail completed and leaflet printed
- By the banks of the Lagan book completed and on sale
- Four editions of the newsletter published
- Towpath initiative - tidy NI award
- Photo competition
- Hits on the website exceeded 20,000
- Bird conservation officer appointed and reports produced
- Bird box installation program completed
- 6 butterfly surveys established and completed
- Three red squirrel transects continued
- Seven 1km bat surveys established and 5 completed
- Planted 170 native oaks and 400 mixed native trees
- 120 m of hedge laid in Lagan Lands East
- Events program with 41 events engaging with over 2200 people
- Engaged with 262 children through pond dips, minibeast hunts and nature trails
- Records of 24 other events 9 other group activities
- Total of 866 volunteer days recorded
- Three volunteer rangers with 51 Volunteer Ranger days
- 473 Conservation Volunteer days
- 21 Volunteer Heritage guides - Equivalent of 129 volunteer days
- Responded to 22 planning applications
- 518 bags of litter collected
- 41 incidents antisocial activities
- 4 information stands at fairs and shows
- Over 42 km of trails and Park paths patrolled weekly (ie over 2000km annually)
- Dealt with over 1500 enquires from members of the public
- Reported back 69 incidents back to partner organisations

Chair's Report

Towpath user numbers indicate that the Park remains one of the most popular, free visitor attractions in Northern Ireland. Our events programme is as popular as ever and the Park team has delivered a range of interesting and creative events, many of which I have attended myself and thoroughly enjoyed.

The Liganscape team have continued to roll out the various projects across the Park as part of the Heritage Lottery Fund's Landscape Partnership Scheme. It is testament to the level of local support and interest in the Regional Park and its rich heritage that the volunteer programme has exceeded all expectations, enabling the roll out of a wide variety of conservation projects and the Lock

Keeper's Cottage to be open to the public most weekdays.

Finally, many thanks to Park Manager Dr. Andy Bridge who has been managing the park during another year on a tight budget. Special thanks to Anne Cleland for her administrative support and much more, Daniel Clarke our Senior Ranger, David Scott our Information Officer, Jo Boylan our Education and Volunteer Coordinator and Cathy Burns Liganscape project manager. We can feel proud of the progress the Park has made over the last year and I am confident further progress will be made in the future.



Manager's Report



This year has been a year of change on many levels. Whilst the parks management plan is drawing to a close and preparations are being made for the next round of funding the liganscape project is also nearing completion.

This project has had the biggest influence on the Park since its inception in 1965 and has enabled so much by way of projects to be realised. As such it seemed an opportune time for the Regional Park to stand back and take a review of itself both as a place and as an organisation. It was to this end that we undertook a strategic review towards the end of the year, the final document has been approved by our board and will be published in the next financial year. Needless to say this document will not only help to focus our plans for the next ten years but will also help to promote our work to the public and organisations.

As usual all of our team have supported and helped to develop one of the most exciting events

programmes to date and we continue to provide a wide range of services working with interest groups, schools and Scouts to name but a few.

Our Ranger Service continues to provide a valuable public service, dealing with enquiries about the region, providing assistance with a wide range of incidents from cows escaping along the towpath to offering first aid support at incidents in the park.

Special tribute must be made to our team of dedicated staff, despite being so under resourced our everyone in our small team has without question gone the extra mile this year in ensuring that we continue to provide excellent service and maintain this valuable interface with Park users. A massive thank you goes out to all our volunteers, their level of support and dedication has been outstanding.

I would like to acknowledge our core funders, Northern Ireland Environment Agency, Belfast City Council, Lisburn City Council, Castlereagh Borough Council and Department of Culture Arts and Leisure. I would also like to thank our numerous partners who support the Park in so many other ways. The success of the Park depends on this support and partnership.

Vision and Key Aims

Lagan Valley Regional Park

The River Lagan and its surrounding valley landscapes are renowned for their natural beauty. At the heart of the Lagan Valley are the River Lagan and canal systems that form the main access and wildlife corridor bridging two of Northern Ireland's population centres. This unique area typified by its rolling landscapes, ornamental parklands and farmland was designated an Area of Outstanding Natural Beauty under the first round of designations in 1965. Shortly thereafter, due largely to concerns of development pressure, the Lagan Valley Regional Park was established as one of three unique semi-urban designations in the UK at that time. The Lagan Valley Regional Park covers an area of 4,200 acres and extends 11 miles along both sides of the River Lagan between Stranmillis, Belfast and Union Locks, Lisburn. The designated area is rich in natural features and biodiversity as well as having a range of locally and nationally important historical sites. Most protected of these, the Giant's Ring, is an archaeological site of outstanding importance in Northern Ireland and in the UK as a whole. This site is a state care protected monument one of the highest levels of protection afforded for sites of archaeological importance. The area also boasts a local nature reserve at Lagan Meadows and 23 sites of local nature conservation

Guiding Principles

For the Regional Park to realise its strategic vision it has developed four guiding principles:

1. Partnership and inclusivity
2. Conservation and protection
3. Value for money and transparency
4. Sustainability

Lagan Valley Area of Outstanding Natural Beauty (AONB)

An AONB is a precious landscape where the distinctive character and natural beauty are so outstanding that it is in the nation's interest to safeguard it (NAAONB, 2003). The Nature Conservation and Amenity Lands Order 1985 sets out the main purposes of an AONB:

To conserve or enhance the natural beauty or amenities of the area.

To conserve wildlife, historic objects or natural phenomena within the area

To promote enjoyment by the public

To provide or maintain public access to the area

Our Mission Statement

We will protect and conserve the unique landscape character of Lagan Valley Regional Park and the Lagan Valley AONB, enhance its biodiversity, cultural heritage and promote its benefit to visitors and the community.



OUR VISION :

A Park that offers a thriving, diverse and valued riverside heritage that welcomes exploration, learning and enjoyment whilst ensuring a sustainable environment for all.



Our Partnerships

Good partnerships are essential to the governance and management of the Regional Park. Working with our partners we have realized all of the goals laid out in the management plan for this year and given the spectrum of varying aims and visions of our partners it is thanks to the coordinated effort of our partners that we have achieved so much. Core funding for the Lagan Valley Regional Park comes from four funding partners:

NIEA

Belfast City Council

Castlereagh Borough Council

Lisburn City Council

DCAL

In addition to the funding partners there are a number of other bodies and organisations with which the Lagan Valley Regional Park works. The Rivers' Agency is responsible for work along the river system and they provide services such as grass cutting along the towpath in close association with DCAL. Forest Service manages Belvoir Park Forest, and the National Trust manages the Minnowburn and Terrace Hill sites as well as

Partner Organisations

As well as funding we also work in partnership with a range of organisations:

Northern Ireland Environment Agency (NIEA)

Department of Culture Arts and Leisure (DCAL)

The National Trust

Countryside and Access Activities Network (CAAN)

Council for Nature Conservation and Countryside (CNCC)

Belfast City Council

Castlereagh Borough Council

Lisburn City Council

Belfast Activity Centre (BAC)

Forest Service

Ulster Wildlife Trust (UWT)

Rivers' Agency

The Forest of Belfast

The Lagan Canal Trust

Grass Roots Conservation Group

Volunteer Service Lisburn (VSL)

Royal Society for the Protection of Birds (RSPB)

Roads Service





A future legacy

The five year management plan for the Regional Park draws to completion this year, and one of the final management targets is to develop the management plan for the next five years. This will involve the careful integration of the Lagscape's legacy into the future management of the Regional Park. Our vision and goal is to ensure the benefits that Lagscape has brought to the Regional Park and all its partners are not lost. Broadly the experience of other Landscape Partnership Schemes throughout the UK indicate that this very much depends on the partners embracing the benefits that the scheme has brought and going that extra mile to sustain all the hard work that has been put in over the five years of the scheme.

Strategic Review

The near completion of the management plan and Lagscape project coupled with the changes brought about by the project have prompted the Park to take a step back and review it's aims and objectives and to see where it works well. As such we undertook a strategic review consulting with our staff, our partners and the general public. The results of the review and our strategic aims will be published next year.

Governance

Our Board of Directors met on five occasions and the Lagscape Sub-committee met on four occasions throughout the year. Our Management Committee met on 10 occasions throughout the year and we held a workshop with the wider membership of the Park and members of the general public interested in the Park's governance.

Director	Representing	Board meetings attended					
		May	Aug	Sep	AGM	Mar	
Alderman Sara Duncan (Chair)	Castlereagh Borough Council	✓	✓	✓	✓	✓	5
Cllr Ane-Marie Beattie	Castlereagh Borough Council		✓	✓	✓		3
Alderman Tom Ekin	Belfast City Council		✓		✓	✓	3
Alderman Ruth Patterson	Belfast City Council						0
Cllr Brian Dornan	Lisburn City Council			✓	✓		1
Cllr Jenny Palmer	Lisburn City Council					✓	1
Mr Dermot Hughes	CNCC	✓		✓	✓	✓	4
Mr Jim Jackson	CNCC	✓	✓	✓	✓	✓	5
Mr Mike Dobson	National Trust						0
Mr Stephen Dickson	BAC (Nominated by ORNI)						0
Mr Peter Galloway (Vice chair)	Public - Natural Heritage	✓	✓	✓	✓		4
Dr Fred Hamond	Public - Built Heritage	✓	✓	✓	✓	✓	5
Mrs Elvira Tulip	Public - Community	✓		✓	✓		3



Interpretation Development

The goal of interpretation development is to ensure that adequate information is provided to all users of the Regional Park.

Website development

Training in the use of the website has enabled updates to be made by both the Regional Park and the Laganscape staff. To date the total number of hits on the website exceeds 26,000 with some 62% of visitors going on to the events page making it the most popular page visited after the homepage.

Heritage Audio Trail

This year saw the launch of the Heritage Audio Trail an innovative way of providing interpretation through unique QR code interpretation points.

Smart phones can take a photograph of the QR code and an app translates this into an short audio giving details about local heritage on each of 34 sites. The audio interpretation is also available from the Lagan Valley website.



Urban Improvements

This year saw the completion of phase 1 of the riverside access and enhancement programme at Millbrook and Huguenot. Working in partnership, Lisburn City Council and the Laganscape project have completed two key access sites featuring the Regional Park and our kingfisher logo. The project included the completion of almost 1km of riverside paths with two dipping platforms and a children's play area. Further work is expected



Built heritage restoration

The Lock Keeper's Cottage has been open from 10am to 4pm throughout most weekdays. With the support of an average of 50 volunteers each month, enabling the cottage to be open to visitors for 1,057 hours throughout the year.



By the Banks of the Lagan

This year saw the completion of the beautifully illustrated hard back copy of the book, by the Banks of the Lagan. This book is a fascinating collection of the memories and stories of people who have worked and lived along the lower reaches of the Lagan. Told in their own rich and colourful language the book reveals the importance of our local and cultural heritage and the communities that were part of that heritage.

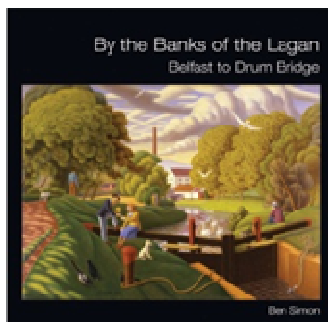


Photo Competition

The second photo competitions have taken place and been judged, with prizes awarded to the winning categories and exhibitions produced to showcase the entries.

Investing In Volunteers award (IIV)

The Laganscape's volunteering program is of such a high standard that we have began preparation towards securing an IIV award and the Volunteer and Education Co-ordinator secured the prestigious Effective Management Of Volunteers certificate from Queens University.



Community involvement

This year the Regional Park has carried out a range of conservation and heritage work. The sort of projects we do includes

- Opening the Lock keepers cottage to visitors
- Controlling invasive species
- Wildlife surveys for butterflies, squirrels and bats
- Tree planting and maintenance
- Hedge laying and maintenance
- Pond and wetland work
- Wildflower management, planting and surveying
- Building and erecting bat and bird boxes
- Scrub and gorse clearance
- Pruning and weeding

Volunteering

The range of work and enthusiasm of our volunteers has been outstanding and if anyone has been out with the conservation volunteer on a Saturday morning I'm sure you'll agree the craic is 90! Local community involvement not only helps define a greater sense of ownership in Lagan Valley Regional Park, by the local community, but it also reduces the likelihood of anti-social behaviour. This year has seen some of the benefits of the Laganscape projects, working with LVRP to develop a range of volunteering opportunities, within the Regional Park. We have started work on developing volunteer rangers and supporting and training some of the work on surveying and transects carried out through Laganscape.

Rhiannon Jones, placement from Queens as part of environmental degree course spent two weeks shadowing a Park Ranger.

Volunteer days

Volunteer Rangers	51
Heritage Guides	129 (at least)
Conservation Volunteers	237
Survey Volunteers	107
As well as these volunteers generated in by Lagan Valley Regional Park through Laganscape, the park has also facilitated :	
PBNI	75 (at least)
SWANN training	189
Grassroots	78

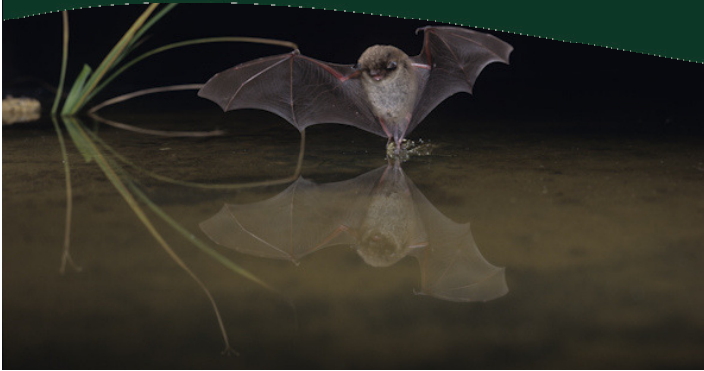
This year saw the contribution of the equivalent of at least 866 volunteer days

If we were to try to value this the volunteer sector is easily contributed over £40k to the Regional Park during this year.

Students, Placements and work experience

Daniella Calvaderre worked with the park for two months on a student placement from the Sustainable Development course at Queens. Daniella did some sterling work reviewing our user survey, rewriting the questionnaire and making several recommendations on the survey.





Habitat management and enhancement

planting 150 oaks and a total of 325 mixed native trees including Silver Birch, Cherry, Crab apple, Hazel, Scots Pine and Spindle.

120 meters of hedge was laid in Lagan Lands East during the winter.

Volunteer and community participation

A total of 866 volunteer days have been recorded for this financial year across several projects including

- Woodland management
- Bird box construction and erection
- Bat surveys
- Seed collection and sowing
- Hedge laying
- Control of invasive species
- Path work
- Wilderness day
- Red squirrel transects
- Butterfly transects
- Bulb planting
- Christmas wreathes
- Scrub clearance

The volunteers have included our Saturday, Casual volunteers, New Horizons, Drumbeg Residents' Association and Soroptomist Ladies and wildlife volunteers.

The paths around Minnowburn have been improved with new paths developed along the field boundaries, providing a variety of options for the journey to the top of terrace hill, where the park can be seen in all its panoramic splendour.

Biodiversity

There are a number of species that are of great importance in the Regional Park. Some have been highlighted through recent survey work carried out in the development stage of the Landscape Partnership Scheme such as several red-listed bird species.

The emblem of the Regional Park, the king-fisher, continues to flourish, its flash of electric blue bringing a thrill to so many visitors to the Park. Other interesting birds found in the survey included Buzzard, Sparrow hawk, Kestrel, Long eared owls, Goshawk and Greylag geese. This year saw the introduction of the Red Kite to Northern Ireland and several sightings have been reported in the Regional Park.

Our key small mammals are still very much present, with regular sightings of Badgers, Otters and Stoats.

Bats

This year 5 survey routes were covered by 21 of our volunteers in the all Ireland Daubenton Bat Survey. This survey has been repeated from previous years and our monitoring provides useful data to add to the big picture for Ireland.

There are 9 species of bat in Northern Ireland and surveying provides information on the conservation status of the species. Bats are considered to be valuable environmental indicators of the wider countryside.

Overall since the all Ireland Daubentons monitoring scheme was started in 2006, the results show a decline to 2008, with numbers rebounding in 2009, 2010 and 2011. Poor water quality and light pollution are detrimental to these animals.

Monitoring and Research

Wildlife

The Regional Park has an ongoing aim to review sites of local nature conservation interest and identify new sites for designation including potential local nature reserves. Baseline surveys have been carried out for key mammal species and databases set up so they can be updated with future recordings. 86 Records forwarded to CEDaR.



Red Squirrels

Surveys of squirrels are continuing with the volunteers associated with the Liganscape project., culminating in the counting of 752 grey squirrels and 4 reds during the course of the year. Sadly no reds have been seen now for several months and the results of an independent study has revealed that whilst there may still be one or two red squirrels around, the population size is now too small to be viable.

Butterflies

Transects are carried out during the summer months at four locations for butterflies as part of the Butterfly Monitoring Scheme, with the possibility of more transects throughout the Park considered. It is envisaged that future survey work can then be used in conjunction with these and other baseline surveys to assess the effectiveness of the different management approaches. Volunteers working with the Ranger Service have carried out weekly butterfly surveys with data forwarded annually to NI Butterfly Conservation officer.



Badger patrol

The Ranger Service continues to make checks on badger setts and monitors other wildlife throughout the park. Thanks to the hard work and enthusiasm of the volunteers, the Ranger Service has been able to expand the UK wide Butterfly Monitoring scheme (a very important indicator species) and now has trained several volunteers with skills required to undertake the six transects now in place.

Welcome to Lagan Valley Regional Park



Education Resource Pack

This year saw the launch of the exciting and innovative Lagan Valley Learning education resource pack. Developed over the past year with the Laganscape team the resource pack has been developed through consultations with some 34 teachers and CASS focus groups. Training has been rolled out to teachers from schools that lie close to the Lagan valley in the use of the education pack. We have subsequently engaged with 262 children through pond dips, minibeast hunts and nature trails and the resource pack has been accessed.




Lagan Navigation



Plants, animals
& habitats



Get this trail
guidance notes

instructions, directions, map etc.

Get
**this trail
activity pack!**



River Lagan



www.laganvalleylearning.co.uk



Minibeasts



Giant's Ring





Towpath Initiative

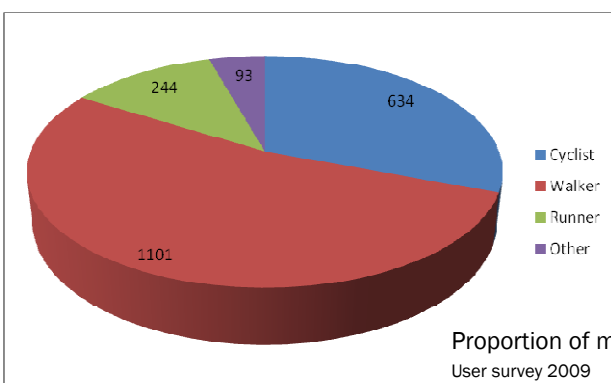
A towpath initiative to reduce the potential for conflict between different user groups on the towpath was undertaken this year; its aim was to promote considerate use by all users.

Partner organisations for the event included the PSNI, Sustrans, local authorities, cycle groups, walking groups and Bikedock supported the event by printing a copy of the towpath code for distribution on the day and by offering to fit bells and provide free safety checks for bikes. The target audience were commuters, young and recreational users and family users. The event was covered by the Belfast Telegraph, Good Morning Ulster and UTV news.

Users

Park wide user surveys are carried out every three years; the last of these took place in 2009. The data gathered in the survey was analysed and a report of the findings presented this year. The use of the Park by visitors is monitored on a weekly basis from counters at five locations and the data reviewed annually with the possibility of new sites considered where appropriate.

Problems with data retrieval have led to a review of the counters culminating in their replacement at the end of the year. However, for the first time we were able to retrieve a full data set for the year 2011 and were impressed to see that the five counters had recorded a total of 1,080,520 users. Whilst this may not give exact visitor figures due to some people walking past the twice or walking past more than one counter, it gives a very good impression of visitor numbers and only represents the towpath, further data from other parts of the Regional Park may well show even greater usage overall.



Promotional Events

We have been actively promoting the Regional Park throughout the year with information stands at shows and fairs such as the BCC, Spring Fair, the Belfast Zoo's Native species Week and Queen's University Environmental Careers Fair.

Big river clean up

The annual river clean up has become a successful project involving many partners; this year's clean up took place in May and involved LVRP, Scouts, Mobile Team Adventure and members of the public. All worked hard and had a rewarding day collecting over 60 bags of litter and an eclectic collection of bicycles, mattress's shopping trolley's, wheel's, toys, and chairs.

Initiatives, Promotions

This years **big river clean up** called the **Lagan Initiative** won a Coast Care Award which was presented to the park at the Tidy NI award ceremony in June. The picture below shows our Senior Ranger Daniel Clarke being presented with the award by the Minister of the Environment Alex Attwood MLA.



Public interface

Public Contact

Effectively whilst out patrolling in the Park the ranger is a mobile interpretation point for members of the community and visitors alike. The Ranger Service will continue to inform and educate visitors through direct public contact and through promotion at public events and country fairs. The ranger service has now embraced the volunteer sector and we have two volunteer rangers and hope to develop this to a maximum of four.

The rangers have worked closely with authorities such as the Police and the Environment Agency on issues such as wildlife incidents and disturbances in the Park, for example, interfer-



Ranger Service

Volunteer and community participation

In an effort to ensure the long term sustainability of the Park, as well as an attempt to encourage ownership of the Park by its users, the LVRP has developed partnerships with a range of organisations to create opportunities for involvement. Through Laganscape we have generated an increase in community engagement through our volunteering programme.

Groups facilitated or supported:

Giant's Ring Stakeholder group - facilitators
Laganscape Sub-committee - represented
Lagan Valley Recreation Group - facilitators
Belfast Lough and Lagan - staff represented
Lagan Canal Trust - staff represented
South Belfast Cleansing - staff represented
NIPAN - member
Northern Ireland Badger group – member
NICVA - member
NEIL- member

Ranger Operations

Over 518 bags of litter collected
114 incidents of antisocial activities
4 public information stands
42 km of paths and trails and patrolled weekly
(That's over 2000km annually!)

Delivering first aid where required
Monitoring water pollution
Reported to 69 incidents to partner organisations
Key role in events program
Maintaining survey work and transects for butterflies, badgers, and squirrels
Establishing new surveys and transects for birds
Delivering additional events for groups and organisations

Park Office

The Park Office is prominently positioned on the towpath at the visitor centre with key attractions of the Lock Keeper's Cottage and the Cafe. The office is a primary interface for the public, in dealing with enquiries, provision of information and education.

This year the Park Office dealt with over 1500 queries, 114 of these were of an antisocial nature and were followed up by the ranger service and relevant authority. These contacts may be in person, via email or by phone and account for around 30% of office time. These range from reports and enquires about wildlife and heritage, directions, access issues and recreation to complaints about litter, dog fouling, toilets, maintenance, fallen trees and vandalism.

We also received enquires about volunteering, student projects and placements, planning, site security and even offered the PSNI assistance in a missing person search.

All of these require some form of follow up, whether it is site visits, investigation or contacting a relevant organisation and whilst it means we are having a good level of public engagement it also means that time taken up dealing with these enquires cannot be spent on the development and implementation of the very projects that would go some way to alleviating the complaints.



Events

1st April	Discovery Morning	11am	Giant's Ring car park	21
16th April	Springtime Wildflower Wander	11am	Lockview car park	18
16th & 17th	Spring fair	1.30 - 5.30pm	Barnette Demesne	
21st April	Giants Ring Easter Walk	11am	Giants Ring car park	25
30th April	Dawn Chorus	6am	LKC	20
6th May	Discovery Morning	11am	Shaw's bridge	15
7th May	Minnowburn Dander	11am	Minnowburn car park	26
21st May	Of Mottesand Men	11am	Shaw's bridge	14
3rd June	Discovery Morning	11am	Giants Ring car park	9
4th June	Towpath Challenge	9.30am	Lockview car park	22
16th June	Return to Source	10am	Drumbridge car park	17
1st July	Discovery Morning	11am	Knightsbridge	11
14th July	Secret Garden	7pm	STLD	26
21st July	Teddy Bears Picnic	11am	STLD	47
23rd July	Butterfly Walk	11am	Lockview car park	16
30th July	Damsels and Dragons	11am	Knightsbridge	20
5th Aug	Discovery Morning	11am	Lockview car park	12
6th Aug	Landscapes of STLD	11am	STLD	7
20th Aug	Wilderness Day	11am	LVRP Visitor Centre	1200
23rd Aug	Going Batty in Belvoir	9pm	Belvoir Activity Centre	27
24th Aug	Going Batty in Belvoir	9pm	Belvoir Activity Centre	28
25th Aug	The Broadwater Aghalee	10am	Drumbridge car park	19
2nd Sept	Discovery Morning	11am	Lower Stables STLD	16
10th Sept	Spider Safari	11am	LKC	21
10th Sept	European Heritage Open Days	11am to 4pm	LKC	137
11th Sept	European Heritage Open Days	11am to 4pm	LKC	210
2nd Oct	National Trails day	11am	LKC	29
7th Oct	Discovery Morning	11am	Shaw's Bridge	14
15th Oct	Fungal Foral	11am	Shaws Bridge	36
22nd Oct	Remarkable trees of Minnowburn	2pm	Minnowburn car park	22
31st Oct	Ghost walk	6.30pm	Belvoir	35
6th Nov	Disover	11am	Lisburn	14
19th Nov	Secrets of Stone Age	11am	Giants Ring car park	22
2nd Dec	Discovery	11am	Stranmillis	4
3rd Dec	Roost Ramble	6pm	Belvoir	27
1th Dec	Christmas crafts	11am	Belvoir	25
17th Dec	Yule logs	11am	Stranmillis	9
14th Jan	Feed our birds	11am	Lock Keepers Cottage	11
28th Jan	Winter wonderland	11am	Belvoir Park Forest	15
3rd Feb	Discovery morning	11am	Lagan Valley Island	13
4th Feb	Broadwater bird watch	10am	Drumbridge car park	9

Additional events; walks, talks, clean up days

Developing partnerships and helping to facilitate a wide range of events and organisations not only helps the Regional Park realise its full potential of users, but also maximises the potential to engage with a broader range of people and provide education and information about the area. We have been able to provide 24 additional events including walks talks, bushcraft days and river clean ups engaging with over 1000 people.

Promotional Literature

The redesigned towpath leaflet was printed at the start of the year. To complement this the Laganscape team produced a leaflet to accompany the Heritage Trail. A leaflet focusing on the cottage and its historical importance was also produced this year funded by the Laganscape project.

Engaging with over 2200 people

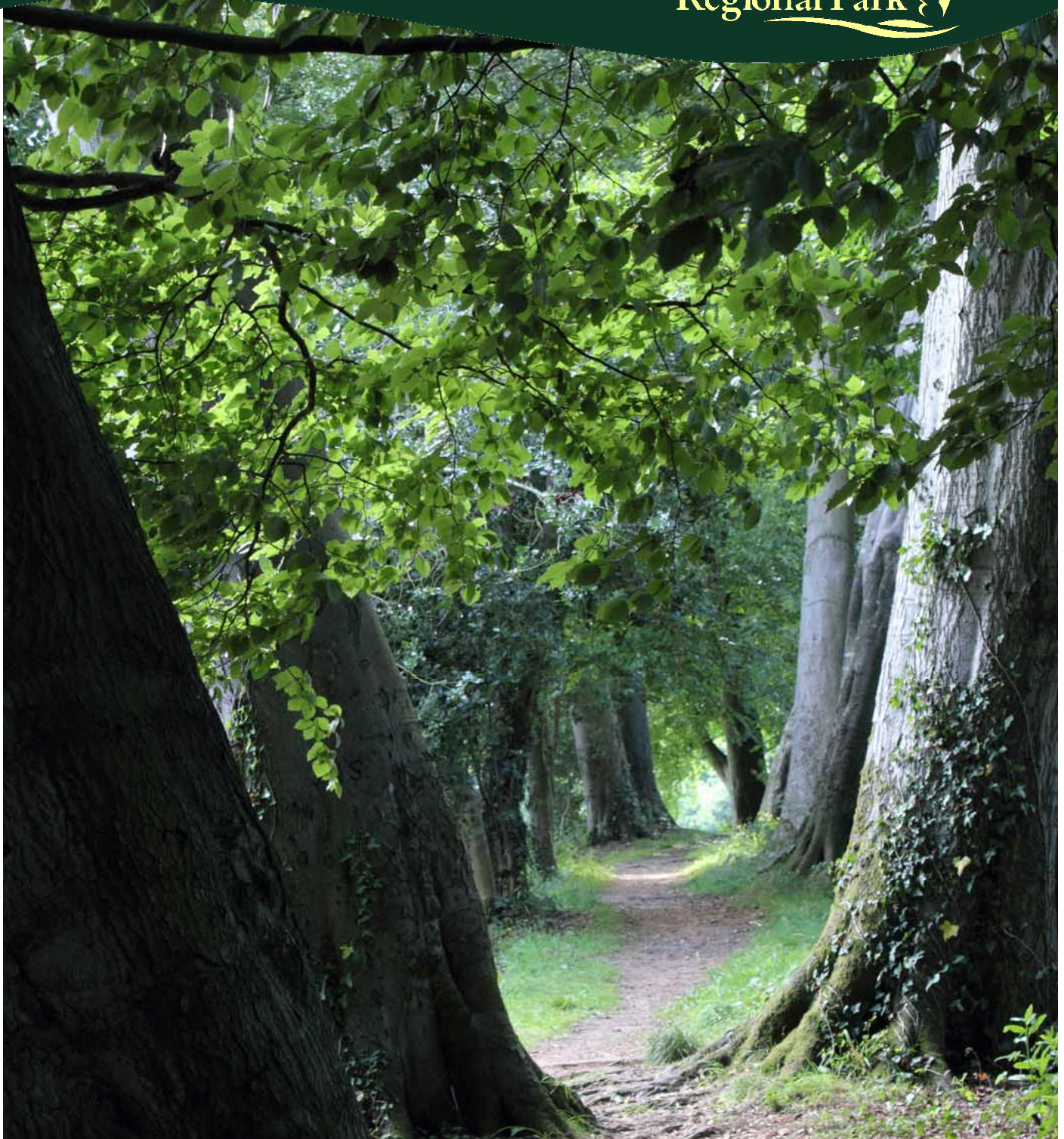
The events the Regional Park runs has engaged with 2269 adults and children throughout the year, not only are reaching out to a wide audience, but we are also able to provide education on local history and biodiversity and are able to spread messages on our walks and talks about biodiversity issues such as invasive species and species that are under threat such as the red squirrel.

By far the biggest level of engagement comes through the wilderness day which very much depends on resources and staff and the tremendous support we have had from our volunteers.



Annual Report 2011/12

Lagan Valley
Regional Park



Castlereagh
Borough Council



LISBURN
CITY COUNCIL

NIEA Northern Ireland
Environment Agency
www.ni-environment.gov.uk



Department of
Culture, Arts
and Leisure



National
Trust



LOTTERY FUNDED

grassroots
NATURES HERITAGE
CONSERVATION GROUP



a million
voices for
nature



Ulster Wildlife Trust



An Agency within the Department of the
Environment
www.doeni.gov.uk

